



**Ribblesdale  
School**

A foundation for success  
since 1932

# SUMMER TERM 2024



## Safeguarding at Ribblesdale

A Newsletter for Our School  
Community  
Pupils, Staff, Parents and  
Governors

### Our Team

#### Designated Safeguarding Leads (DSLs)

Lead DSL  
Mrs Dewhurst

Deputy DSL  
Mrs Power  
Miss Ralphson  
Mrs Mashiter  
Miss Parkinson  
Mr Small

Primary Phase Deputy DSL  
Miss Whalley  
Mrs Jackson



### What Issues Are Important To You?

We would like to signpost you to our new well-being resource. This has been put together with the school's context in mind and contains support on issues such as online safety, drugs and emotional and mental well-being.

Furthermore, to support the emotional health and well-being of our pupils, we recently held the whole school 'Well-Being' day, which was a huge success and focused on areas such as take notice, give, connect and be active. **Well-Being Matters -What issues are important to you? ([padlet.com](https://padlet.com))**

### How to report issues or concerns:

**Pupils** – always tell an adult if you need help. Remember, we have Pastoral Coordinators but all staff are here to listen and help. You can also use the Green Heart reporting system on your device.

**Parents** – our Pastoral Coordinators and Pastoral Intervention Managers are always here to help and our team of DSLs are available for guidance and support.

**Staff** – Always report concerns immediately. This should be via CPOMS – if in doubt, always speak to a DSL.

### Dr Stuart Lawrence

This term, we have had the privilege of welcoming Dr Stuart Lawrence into school. He led assemblies and worked with small groups, sharing the tragic story of his brother Stephen Lawrence. A powerful message about sorrow and forgiveness.

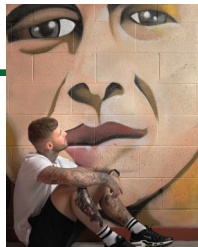
### Safeguarding Assemblies

As part of our Personal Development curriculum, we have half termly safeguarding assemblies for pupils and form tutors.

Summer Term



This term, pupils have received assemblies on the issues and dangers of vaping. Furthermore, the Fire Service have been in to deliver information about 'Water Safety.' Please continue to discuss ways in which our young people can keep safe over the summer holidays, if they choose to visit local rivers and lakes. Further information can be found here [Water Safety | Lancashire Fire and Rescue Service](#)



### The JJ Effect

Pupils have had assemblies delivered by The JJ Effect, highlighting the dangers associated with knife crime and how to keep safe.

Website: [ribblesdale.org](https://ribblesdale.org)  
X: @ribbweb  
Insta: @ribblesdalehigh  
Facebook: @ribblesdalehigh

'Everybody, Everyday'

Safeguarding Governor

Mrs Nestor



**Ribblesdale  
School**

A foundation for success  
since 1932



## What is our Early Help offer?

The 'Early Help Assessment' is a tool we use to support our work with families by helping us work with them to identify their needs and plan appropriate responses. To complete an assessment, our Pastoral Intervention Manager (PIM) will talk with members of the family to gather, explore and analyse with them, information about all aspects of their life. They then identify areas where changes and additional support might help them.

Examples of such support are:

- In school support
- Allocated Pastoral Coordinator
- School Counsellor
- School therapy dog
- Managing emotions workshop
- Morning breakfast group for pupils experiencing anxiety
- School Nurse
- Working with trained staff in Emotional Literacy Support (ELSA) and Emotional Based School Avoidance (EBSA)

Referrals if appropriate can also be made to:

- LCC Early Help
- NEST – Domestic Violence
- Wish Centre – Parachute Programme
- RYPP – Challenging relationship support
- MHST – Mental Health support
- PPP parenting programme – Help with parenting techniques

### Children's Safeguarding Assurance Partnership (CSAP)

CSAP provides a variety of information, advice and guidance to support the safeguarding of young people across the Pan-Lancashire region. It is aimed at Blackpool, Lancashire and Blackburn with Darwen region. There are useful resources available at <https://www.safeguardingpartnership.org.uk/>

## Inclusivity Is at the Heart of All That We Do

### 'THE BRIDGE'

**A nurturing space, for pupils to bridge the gap between where they have been and where they want to go. A place that promotes inclusivity for all. The skilled and experienced staff work with pupils on a 'one to one' or small group basis, depending on need. Pupils may be in The Bridge for any of the following reasons:**

- ◆ Emotional support
- ◆ Additional curriculum support
- ◆ Bespoke timetable/ reintegration
- ◆ Medical needs
- ◆ 'Reflect & Resolve' time



### Operation Encompass

Operation Encompass is a partnership between police and schools. One of the principles of Operation Encompass is that all incidents of domestic abuse are shared with schools, not just those where an offence can be identified. Our DSLs are notified prior to the start of the next school day that the police have attended an incident of domestic abuse. This timely information sharing enables appropriate support to be provided for that child so that all interactions, from when the child first arrives at the school gates, are of a positive nature. Operation Encompass notifications also include Children who Are Missing From Home.



Website: [ribblesdale.org](http://ribblesdale.org)

X: @ribbweb

Insta: @ribblesdalehigh

Facebook: @ribblesdalehigh

Children's  
**Safeguarding Assurance  
Partnership**

Blackburn with Darwen - Blackpool - Lancashire

'Everybody, Everyday'



**Ribblesdale School**

A foundation for success since 1932

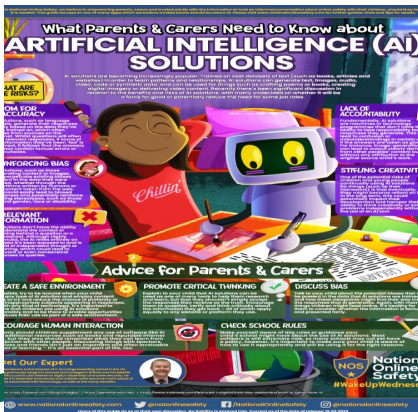


In Reception, we have continued with our age-appropriate safeguarding education, by discussing how we can keep our minds healthy, as well as our bodies. We also talk about how we can keep ourselves safe over the summer holidays, by not approaching strangers unless in an emergency and how to be careful around water.



### Keeping Pupils Safe Online

As a school we are starting to review how we use AI and we are producing a new policy based on its acceptable use. Artificial intelligence is increasingly becoming a part of modern life and, for all intents and purposes, isn't something we can shy away from. The explosion of ChatGPT, for instance, has brought this kind of technology into a more purposeful context, with millions now using the language model to help solve problems, write computer code or even complete their ILO'S. So how do artificial intelligence solutions work exactly? What kind of risks do they bring? Will they eventually negate the need for certain job roles, particularly in the creative industries? These are all of the questions that we are considering.



### Staff Training

All staff complete annual safeguarding training and ensure that they are up to date with Keeping Children Safe in Education (KCSIE). In addition to this, regular training and updates take place throughout the year. So far, the focus has been on:

#### Summer Term

- Trauma Informed Practice
- Prevent



**The Ribblesdale Way**  
*"a mind to be kind"*



At Ribblesdale, we work very closely with outside agencies to provide bespoke support and intervention for pupils e.g. the MHST, Nest and Child Action North West.



Website: [ribblesdale.org](http://ribblesdale.org)  
X: @ribbweb  
Insta: @ribblesdalehigh  
Facebook: @ribblesdalehigh

**'Everybody, Everyday'**

